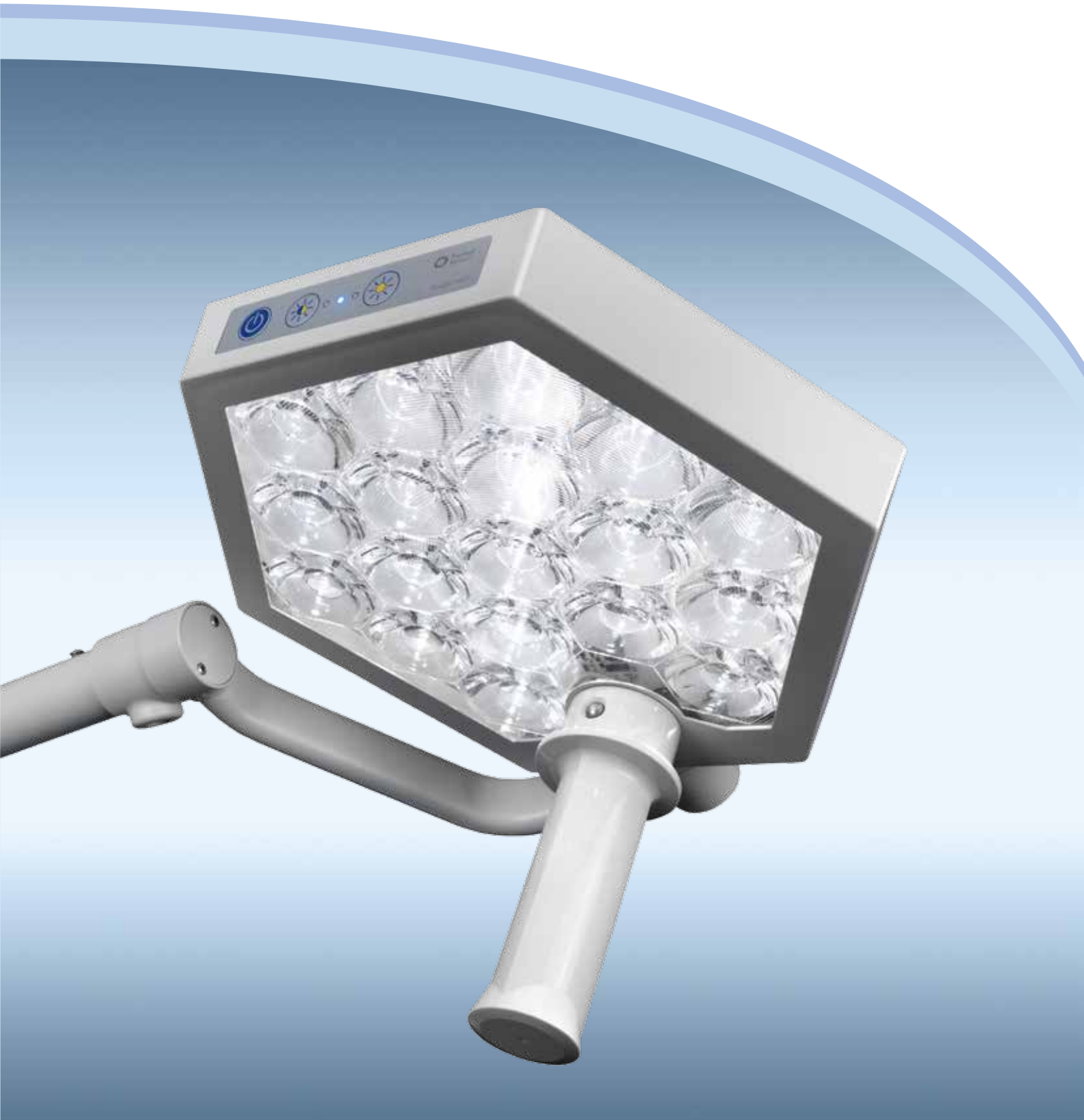


TruLight™ 1000 Examination Light

Wide range of applications



Enhancing outcomes for patients and their caregivers:



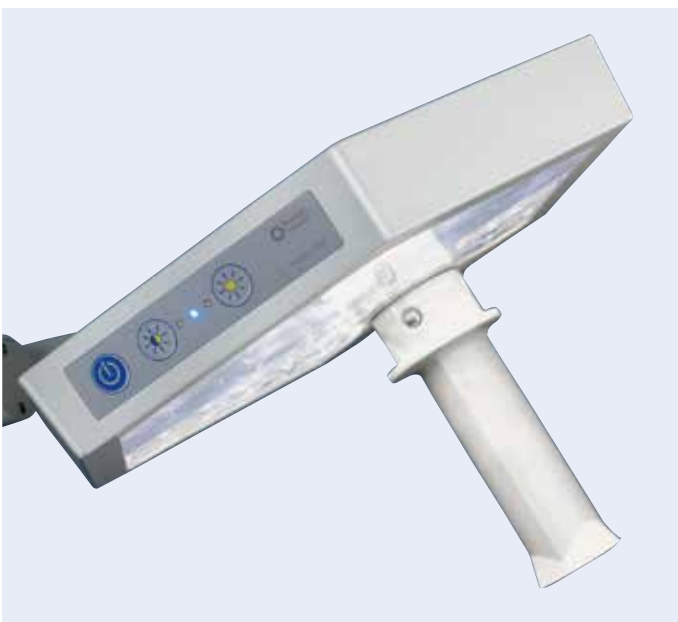
TruLight™ 1000 Examination Light: value and flexibility

Halogen is history. Now, you can enjoy all the benefits of LED technology in your examination light, including greater light intensity, longer service life, reduced heat generation and minimal power consumption. In addition, the specially balanced support arms and light weight light head, makes the TruLight™ 1000 Examination Light easy to position.



Lighting: the state of the art

With its LED technology, the TruLight™ 1000 Examination Light offers not only higher light intensity, but also superior light quality when compared to conventional halogen lights. Light is optimally distributed by the unique Trumpf Medical™ multi-lens matrix, which provides homogenous light quality in both area and depth, for the best-possible visualization during examinations and minor procedures.



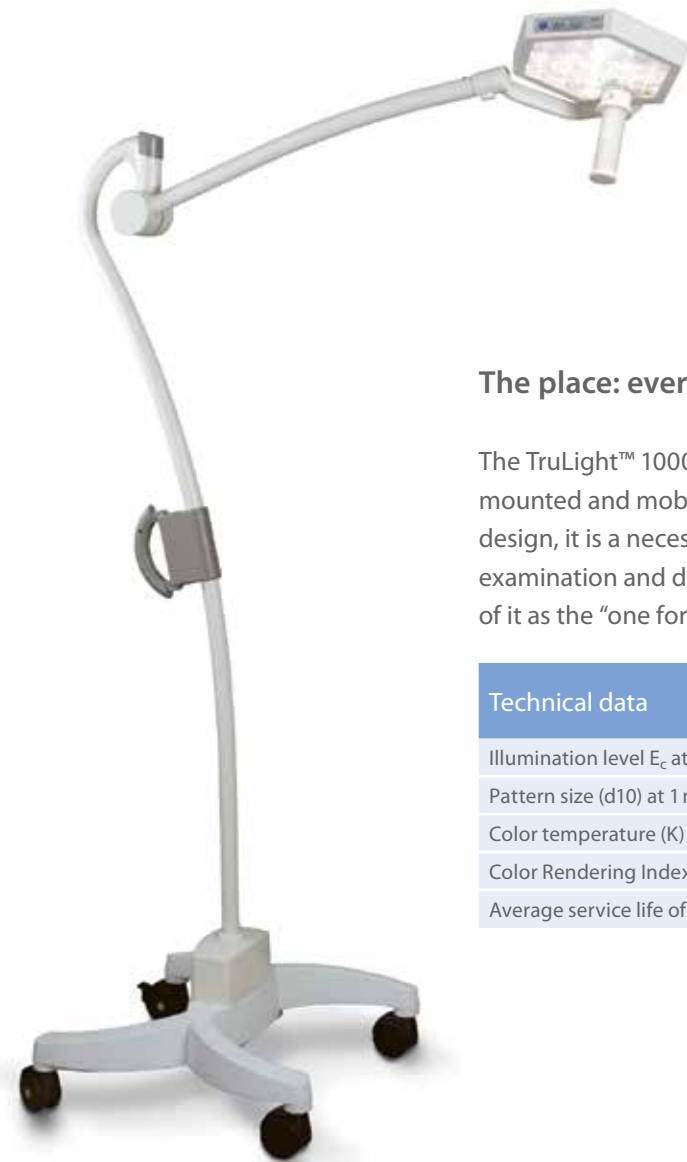
Handling: simple, flexible, convenient

With specially balanced support arms that are very light weight, the TruLight™ 1000 Examination Light is easy to position. Plus, with the sterilisable handle, it is suitable for hygienically critical applications. Everything you could want in comfort and flexibility.



Energy efficiency: power with economy

Our lighting system offers compelling advantages over the traditional halogen light including a significantly longer service life, less heat generation, greater reliability and lower power consumption.



The place: everywhere

The TruLight™ 1000 Examination Light is available in ceiling-mounted, wall-mounted and mobile versions. With its high flexibility and space-saving compact design, it is a necessity for medical practices, outpatient clinics, and hospital examination and delivery rooms, as well as preparation and recovery areas. Think of it as the “one for all” light.

Technical data	TruLight™ 1000
Illumination level E_c at 1 m (lx)	80,000
Pattern size (d10) at 1 m (cm) (inch)	16 6.3"
Color temperature (K)	4,500
Color Rendering Index (Ra)	95
Average service life of the LEDs (h)	60,000

Hill-Rom is a leading global medical technology company with more than 10,000 employees in over 100 countries. We partner with health care providers by focusing on patient care solutions that improve clinical and economic outcomes in five core areas: **Advancing Mobility, Wound Care and Prevention, Clinical Workflow, Surgical Safety and Efficiency, and Respiratory Health**. Hill-Rom people, programs, and product brands work towards one mission: **Every day, around the world, we enhance outcomes for our patients and their caregivers.**

Trumpf Medical, part of Hill-Rom, is distinguished by high-quality German engineering standards and offers innovative products to improve efficiency and safety in the OR, ICU, and in other clinical environments throughout the care sector. With our customers' requirements as our benchmark and innovation as the foundation of our success, Trumpf Medical delivers total solutions to fit your clinical care needs.

This document is destined solely for use by healthcare professionals. Medical devices shown in this brochure are intended for use with patients in departments of healthcare establishments.

These products are regulated health care products which, where required by applicable regulations, bear a CE mark. Hill-Rom recommends you carefully read the detailed instructions for safe and proper use included in the documentation accompanying the medical devices. The personnel of healthcare establishments are responsible for the proper use and maintenance of these medical devices.

TruLight™ is a registered trademark of TRUMPF GmbH+ Co. KG.

Hill-Rom reserves the right to make changes without notice in design, specifications and models. The only warranty Hill-Rom makes is the express written warranty extended on the sale or rental of its products.

©2016 Hill-Rom Services, Inc. ALL RIGHTS RESERVED.
Doc. No: 2027451, 16 November 2016

Not all products/options are available in all countries.
For further information about our products or services, please contact your local Trumpf Medical representative or visit our webpage:

www.trumpfmedical.com

Enhancing outcomes for
patients and their caregivers:

Hill-Rom